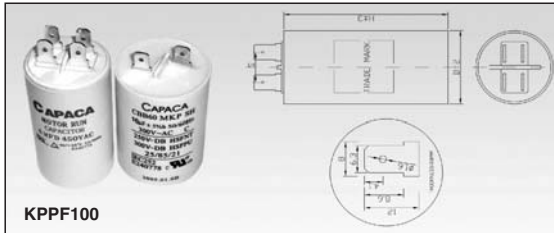


	pag
<input type="checkbox"/> Condensatori Capacitors	166.
<input type="checkbox"/> Morsettiere ceramiche Porcelain terminals	167, 168.
<input type="checkbox"/> Morsettiere Terminal blocks	169.
<input type="checkbox"/> Varialuce Dimmer	170.
<input type="checkbox"/> Regolatore di energia Energy regulator	171.
<input type="checkbox"/> Lampade led Led lamps	172.
<input type="checkbox"/> Strisce led luminose Led lighting strips	173.
<input type="checkbox"/> Resistenze PTC PTC heating	174.
<input type="checkbox"/> Vasche e cestelli in acciaio Stainless steel tanks and baskets	175.
<input type="checkbox"/> Allarme Alarm	176.

## CONDENSATORI

## CAPACITORS



KPPF100

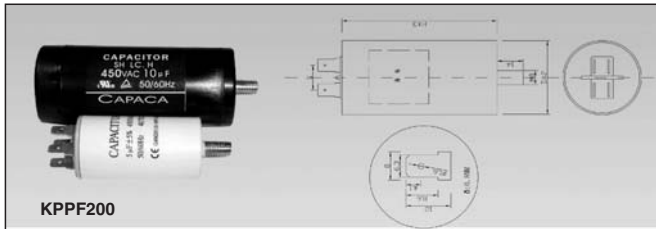
### FEATURES AND APPLICATIONS:

Round type ABS epoxy resin sealed case with dual quick connects termination. Moisture resistant, high insulation & good self-healing these models are applicable to 50/60Hz home electric appliances and pumps.

### SPECIFICATIONS:

Rated Frequency : 50/60 Hz  
 Rated Voltage: 120-500 VAC  
 Rated Capacitance: 1-120 MFD  
 Capitance Tolerance: -10/ +10%  
 Temperature Range: -40/+70 degree  
 Dissipation Factor: 0.002 (50/60 Hz)  
 Testing Voltage: T-T: 2 Un 2s; T-C: 2000V AC 10s  
 Standard: GB/T3667-1-2005 IEC60252-1: 2001

		(Dimensions)							
D (mm)	S (mm)	34	40	45	50	55	60	(R. Voltage)	350/300V
		14	15	15	16	16	18		
								(R. Voltage)	350/450V
		Capacitance(μF)		D×H (mm)				Capacitance(μF)	D×H (mm)
		2	4	4	6	8	10	4	34×63
		4	6	6	8	10	12	6	34×63
		6	8	8	10	12	15	8	34×63
		8	10	10	12	15	16	10	34×63
		10	12	12	15	16	20	12	34×63
		12	15	15	16	20	25	15	40×73
		15	16	16	20	25	30	16	40×73
		20	25	25	30	35	40	20	40×73
		25	30	30	35	40	50	25	45×73
		30	35	35	40	45	50	30	45×90
		35	40	40	45	50	60	35	45×90
		40	45	45	50	55	60	40	50×100
		45	50	50	55	60	70	45	50×100
		50	55	55	60	70	80	50	55×105
		60	70	70	80	90	100	60	55×105
		70	80	80	90	100	110	70	55×105
		80	90	90	100	110	120	80	60×110
		90	100	100	110	120	130	90	60×110
		100	110	110	120	130	140	100	60×110



KPPF200

### FEATURES AND APPLICATIONS:

Round type burning resist case with M8 screw, dual quick connects termination, featuring moisture resistant, high insulation & good self-healing ability, applicable to 50/60Hz heavy duty lamps and pumps.

### SPECIFICATIONS:

Rated Frequency : 50/60 Hz  
 Rated Voltage: 220-500 VAC  
 Rated Capacitance: 0,6-60 MFD  
 Temperature Range: -25/+85 degree  
 Dissipation Factor: 0.004 (100 Hz, 20°C)  
 Testing Voltage: T-T: 2 Un 2s; T-C: 2000V AC 10s  
 Standard: GB/T3667-1-2005 IEC60252-1: 2001

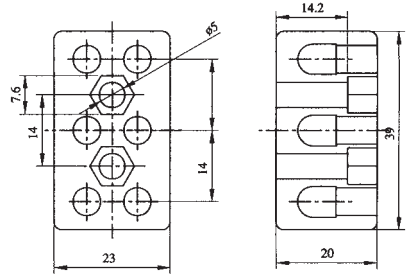
		(Dimensions)					
D (mm)	S (mm)	34	42	45	55	(R. Voltage)	250V
		14	15	15	16		
		Capacitance(μF)		D×H (mm)		(R. Voltage)	450V
		0,6	1	1	2,5	0,6	34×63
		1	2,5	2,5	3	1	34×63
		2,5	3	3	4	2,5	34×63
		3	4	4	5	3	34×63
		4	5	5	6	4	34×63
		5	6	6	8	5	34×63
		6	8	8	10	6	34×63
		8	10	10	12	8	34×63
		10	12	12	15	10	34×63
		12	15	15	16	12	34×63
		15	16	16	20	15	34×63
		16	20	20	25	16	34×63
		20	25	25	30	20	42×83
		25	30	30	35	25	42×83
		30	35	35	40	30	42×83
		35	40	40	45	35	42×83
		40	45	45	50	40	42×83
		45	50	50	55	45	45×90
		50	55	55	60	50	45×90
		60	60	60	60	60	45×90

## MORSETTIERE CERAMICHE

## PORCELAIN TERMINALS

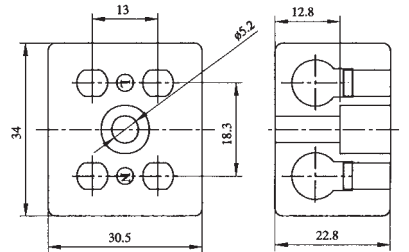
**K516E** 600V 10A

Rating:600V 10A  
Weight:38.5g



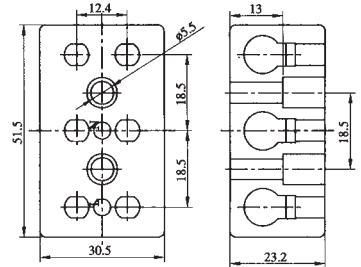
**K516F** 600V 10A

Rating:600V 10A  
Weight:46g



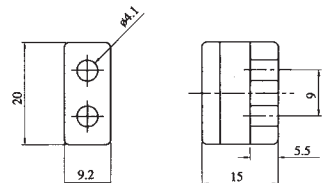
**K516G** 600V 10A

Rating:600V 10A  
Weight:71.5g



**K516H** 250V 4A

Rating:250V 4A  
Weight:6g

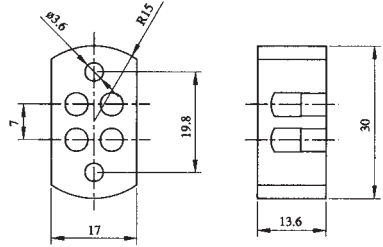


## MORSETTIERE CERAMICHE

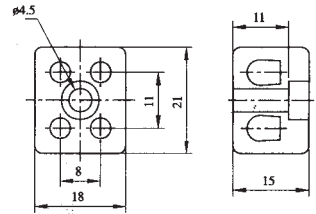
## PORCELAIN TERMINALS



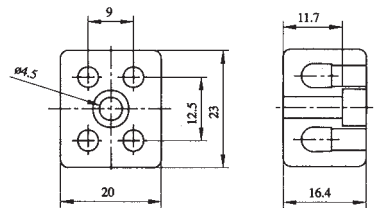
**K516A** 250V 10A  
Rating:250V 10A  
Weight:20g



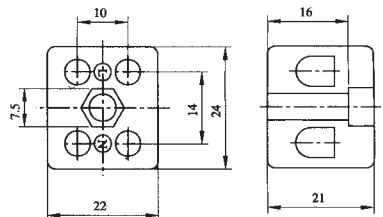
**K516B** 250V 4A  
Rating:250V 4A  
Weight:12g



**K516C** 250V 4A  
Rating:250V 4A  
Weight:16.5g



**K516D** 250V 4A  
Rating:250V 4A  
Weight:23g

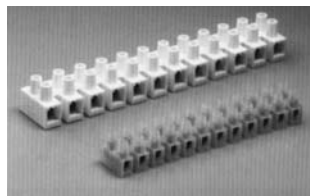
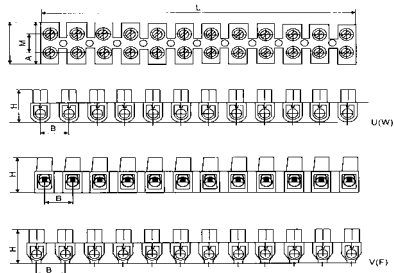


## MORSETTIERE

## TERMINAL BLOCKS

Material: made from PA, PE OR PP.

ITEM NO.	L	A	H	M	B	mm <sup>2</sup>	VOLT	AMP	PACKING
HT-3A	93	16	12	6	8	4	400V	3A	10PCS
HT-6A	115	15.7	13	6.5	9.5	6	400V	6A	
HT-10A	126	20.2	15.5	8.4	10.5	10	400V	10A	
HT-16A	139	23	17.7	10.3	12	12	400V	16A	
HT-20A	155	25	19.2	11.5	13.5	14	400V	20A	
HT-30A	171	26	20.5	12	14.5	16	400V	30A	
HT-60A	192	30	26	13.5	16.5	25	400V	60A	
HT-80A	205	33	27	15	17	35	400V	80A	
HT-100A	250	46	31	22	21	40	400V	100A	



### Morsettiere per alta temperatura

*Terminal blocks suitable for high temperature applications*

#### FV 77



S (mm<sup>2</sup>) 4.0  
V (Volts) 450  
I (A) 40  
work.temperature (°C) -5÷150

#### FV 110



S (mm<sup>2</sup>) 6.0  
V (Volts) 450  
I (A) 40  
work.temperature (°C) -5÷150

#### FV 122



S (mm<sup>2</sup>) 6.0  
V (Volts) 450  
I (A) 40  
work.temperature (°C) -5÷150

#### FV 273



S (mm<sup>2</sup>) 6.0  
V (Volts) 450  
I (A) 41  
work.temperature (°C) -5÷150

### Morsettiere con fissacavo

*Terminal blocks with integrated cable clamp*

#### P 84



S (mm<sup>2</sup>) 1.5  
V (Volts) 450  
I (A) 10÷16  
work.temperature (°C) -5÷110

#### PA 299

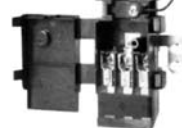


S (mm<sup>2</sup>) 1.5  
V (Volts) 450  
I (A) 16  
work.temperature (°C) -5÷125

### Morsettiere protette

*Terminal boxes*

#### PA 309



S (mm<sup>2</sup>) 1.5  
V (Volts) 400  
I (A) 16  
work.temperature (°C) -5÷125

#### PA 223 S



S (mm<sup>2</sup>) 6.0  
V (Volts) 450  
I (A) 40  
work.temperature (°C) -5÷125

## VARIABLE

**Tipo: RTS37**

### DESCRIZIONE

- Varialuce da pannello con potenziometro e interruttore incorporato
- Impostazione del minimo
- 230V~50÷60Hz
- 600÷1500W carico resistivo.

## DIMMER

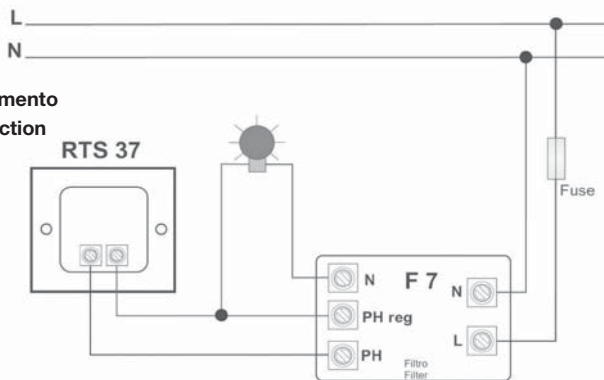
**Type: RTS37**

### DESCRIPTION

- Panel dimmer with potentiometer and built-in switch
- Trimmer for idling regulation
- 230V~50÷60Hz
- 600÷1500W resistive load.



**Schemi di collegamento**  
**Diagram of connection**

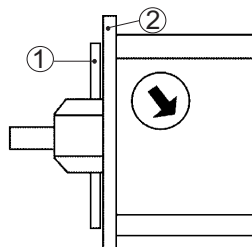
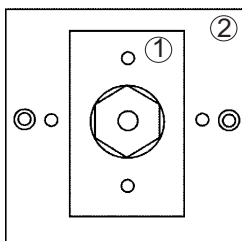


### Montaggio RTS37

Spessore (1) tra pannello e radiatore metallico (2) per la dissipazione del calore

### Assembling RTS37

Washer (1) between panel and metallic radiator (2) for heat dissipation



## REGOLATORE DI ENERGIA

**Typo: 50.57XX1.010**

### CARATTERISTICHE GENERALI

- Temperatura: T-125 °C
- Campo di lavoro: da 52 a 308 °C
- Incremento della potenza: dal 6 al 70% della potenza a disposizione
- Approvazioni: VDE

### CARATTERISTICHE

I regolatori di energia controllano la temperatura disattivando e riattivando la potenza ad intervalli brevi o lunghi. Il livello massimo corrisponde ad un'erogazione continua della potenza. I regolatori di energia vengono montati dietro il frontalino dei comandi.

I regolatori di energia contengono un componente bimetallico riscaldato, un meccanismo a scatto, ed una molla di commutazione dotata di contatto. Quando la resistenza viene attivata, la corrente scorre parallelamente alla resistenza dell'area di cottura grazie al riscaldamento del componente bimetallico. In tal modo detto componente si riscalda, si deforma e fa scattare il rispettivo contatto.

Modificando la regolazione della manopola di commutazione, varia, tramite una camme, la distanza tra il componente bimetallico ed il contatto del regolatore. A seconda della distanza, il regolatore di energia attiva un intervallo lungo o breve di alimentazione della corrente.

## ENERGY REGULATOR

**Typo: 50.57XX1.010**

### GENERAL FEATURES:

- Temperature: T-125 °C
- Graduation: 52/308 °C
- Power increase: from 6 to 70%
- Approvals: VDE

### FEATURES

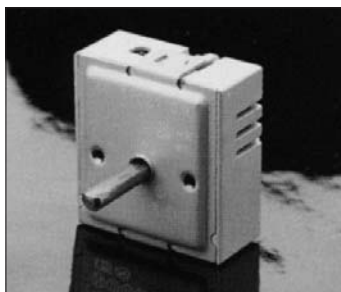
Long duty cycle and short intervals between heating = greater average output, e.g. for heating up, roasting.

Short duty cycle long intervals between heating = smaller average output, e.g. for simmering, steeping.

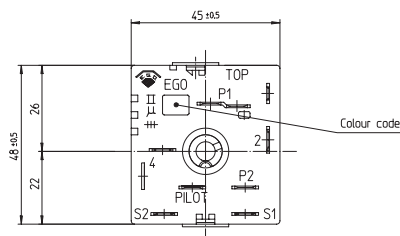
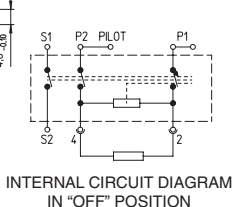
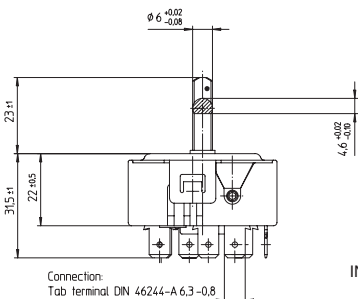
The output of the hotplates can be set to between 6% and 70% of the rated output. Select highest setting for full nominal rating (100%).

Infinitely variable control of the power supply. The energy regulator mainly consists of a heated bimetal and a snap-action switch (spring contact). It is mounted directly behind the hotplate's control knob.

When the hotplate is switched on, current flows through bimetal heating, parallel to the heating resistor of the hotplate. This causes the bimetal to heat up and change its shape accordingly. The setting on the control knob actuates a cam that changes the spacing between bimetal and regulator contact. This causes the energy regulator to select longer or shorter intervals.



50.57131.010	120	13
50.57111.010	100	13
50.57101.010	200	13
50.57071.010	240	13
50.57061.010	110	13
50.57051.010	380	7
50.57031.010	400	7
50.57021.010	230	13
50.57011.010	220	13
Type number	V AC Voltage	A Amperage



## LAMPADE LED

### Features:

- Compatible with AC. 100V~240V. AC power.
- Compatible with AC/DC 12V Transformer.
- Energy Saving power, User Friendly.
- High brightness, Apply high Performance LED.
- Environmental Friendly.
- Long operating life. (up to 20.000 hours).
- Light Color: Red, Yellow, Blue, Green, White, Cold White, Warm White, RGB.



### PL/MR16-XX/X-1G 48LEDs GU10 series Socket GU10 AC 240W

Model	Color	Viewing Angle	LED qty	Luminosity (lm)	LED Wattage
WW/48-1G	Warm White	30°±5	48	95±3	3.2W±0.1
CW/48-1G	Cool White	30°±5	48	100±3	3.2W±0.1
R/48-1G	Red	30°±5	48	26±3	2.4W±0.1
Y/48-1G	Yellow	30°±5	48	22±3	2.4W±0.1
G/48-1G	Green	30°±5	48	90±3	3.2W±0.1
B/48-1G	Blue	30°±5	48	26±3	3.2W±0.1

## HIGH POWER LED LAMP

### Applications:

- Reading Lamp
- Interior Lamp
- General Lighting
- Landscape Lighting
- Entertainment Lighting
- Decoration Light source.



### PL-HP/JDR/E14-XX/1\*3W-4A 3W JDR series Socket E14 AC 100-240V

Model	Color	Viewing Angle	LED qty	Luminosity (lm)	LED Wattage
WW/1*3W-4A	Warm White	25°±3	1	85±3	4.3W±0.1
CW/1*3W-4A	Cool White	25°±3	1	90±3	4.3W±0.1
R/1*3W-4A	Red	25°±3	1	75±3	3.6W±0.1
Y/1*3W-4A	Yellow	25°±3	1	75±3	3.6W±0.1
G/1*3W-4A	Green	25°±3	1	90±3	4.3W±0.1
B/1*3W-4A	Blue	25°±3	1	24±3	4.3W±0.1



### PL-HP/JDR/E27-XX/3\*1W-4A 3W JDR series Socket E27 AC 100-240V

Model	Color	Viewing Angle	LED qty	Luminosity (lm)	LED Wattage
WW/3*1W-4A	Warm White	15°±3	3	100±3	5W±0.15
CW/3*1W-4A	Cool White	15°±3	3	105±3	5W±0.15
R/3*1W-4A	Red	15°±3	3	90±3	4.2W±0.15
Y/3*1W-4A	Yellow	15°±3	3	90±3	4.2W±0.15
G/3*1W-4A	Green	15°±3	3	100±3	5W±0.15
B/3*1W-4A	Blue	15°±3	3	34±3	5W±0.15



### PL-GL/B3TDW/E27-XX/36A-4G 36LEDs Socket E27 AC 100-240V

Dimension	Model	Color	LED qty	Luminosity (lm)	LED Wattage
	WW/36-4G	Warm White	36	85±3	2W±0.1
	CW/36-4G	Cool White	36	95±3	2W±0.1
	R/36-4G	Red	36	24±3	1.8W±0.1
	Y/36-4G	Yellow	36	26±3	1.8W±0.1
	G/36-4G	Green	36	90±3	2W±0.1
	B/36-4G	Blue	36	22±3	2W±0.1
	RGB/36-5G	RGB	36	35 Max	2W Max

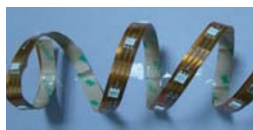
## STRISCE LED LUMINOSE

### STRISCE LED LUMINOSE IMPERMEABILI

- 12V, 60LED/mt, 120° PVC • Dimensione: 500x10mm
- Peso netto: 60 g. • Water proof IP65
- Utilizzo: impermeabili, per esterno e interno, non in acqua
- Lunghezza massima: 5 metri • Lunghezza minima: 3 led

Solo per il tipo RGB:

- 30LED/mt • Dimen: 500x12mm • Variatore su richiesta



## LED LIGHTING STRIPS

### COMMON WATERPROOF LED LIGHTING STRIPS

- 12V, 60LED/mt, 120° PVC • Size: 500x10mm
- Net Weight: 60 g. • Water proof IP65
- Use: waterproof, indoor and outdoor, not in water
- Max length: 5 meters • Min. length: 3 led

Only for RGB:

- 30LED/mt • Size: 500x12mm • Controller on request

Art. n. Item No.	Colore Colour	Angolo luce View Angle	Voltaggio Voltage	Corrente Working current	Tensione Power	Lungh.onda Wave length	Flusso luminoso/m Luminous flux/mt
WP-F30R	rosso red	120°	12V	250-240mA	2.64-2.88W	625-630nm	45
WP-F30Y	giallo yellow	120°	12V	220-240mA	2.64-2.88W	590-595nm	68
WP-F30B	blu blue	120°	12V	170-200mA	2.04-2.4W	465-470nm	36
WP-F30G	verde green	120°	12V	170-200mA	2.04-2.4W	515-520nm	48
WP-F30W	bianco white	120°	12V	170-200mA	2.04-2.4W	4500-8000K	180
WP-F30WW	bianco caldo warm white	120°	12V	170-200mA	2.04-2.4W	2700-3500K	95
WP-F30O	arancione orange	120°	12V	220-240mA	2.64-2.88W	600-615nm	68
NW-F30RGB	RGB	120°	12V	R: 560mA B: 512mA G: 630mA	6.72-7.68w	R: 625-630nm B: 465-470nm G: 515-520nm	R: 45 B: 35 G: 45

### STRISCE LED LUMINOSE STAGNE

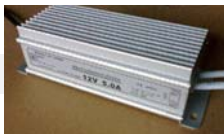
- Stesse caratteristiche delle precedenti ma con le seguenti differenze: • Water proof IP68
- Utilizzo: stagno, in acqua fredda

### TUBE WATERPROOF LED STRIP LIGHTING

- Same characteristics as before, with following differences: • Water proof IP68
- Use: water-tight, used in cold water

Art. n. Item No.	Colore Colour	Angolo luce View Angle	Voltaggio Voltage	Corrente Working current	Tensione Power	Lungh.onda Wave length	Flusso luminoso/m Luminous flux/mt
WP-TF30R	red	120°	12V	250-240mA	2.64-2.88W	625-630nm	45
WP-TF30Y	yellow	120°	12V	220-240mA	2.64-2.88W	590-595nm	68
WP-TF30B	blue	120°	12V	170-200mA	2.04-2.4W	465-470nm	36
WP-TF30G	green	120°	12V	170-200mA	2.04-2.4W	515-520nm	48
WP-TF30W	white	120°	12V	170-200mA	2.04-2.4W	4500-8000K	180
WP-TF30WW	warm white	120°	12V	170-200mA	2.04-2.4W	2700-3500K	95
WP-TF30O	orange	120°	12V	220-240mA	2.64-2.88W	600-615nm	68
NW-F30RGB	RGB	120°	12V	R: 560mA B: 512mA G: 630mA	6.72-7.68w	R: 625-630nm B: 465-470nm G: 515-520nm	Red: 45 Blue: 35 Green: 45

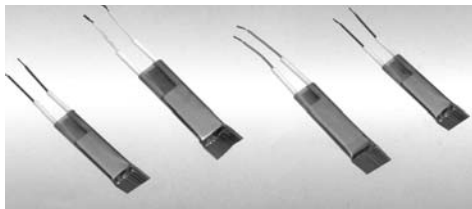
Trasformatore 230V/12V su richiesta



Transformer 230V/12V on request

## RESISTENZE PTC

Le resistenze PTC, il cui funzionamento dipende dal progno della resistenza PTC, sono in grado di mantenere il controllo della temperatura in modo sicuro ed affidabile. Use: apparecchi per parrucchieri, per massaggi, strumenti per la fusione della cera, ferri elettrici ecc.



### Product model

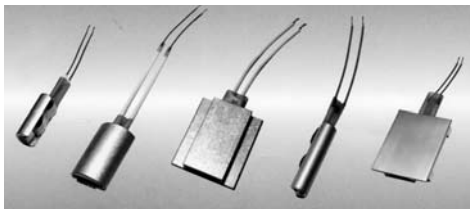
TYII	/	250	+	550	/	070	/	020	D
1		2	3	4		5		6	7

- Type:
- Surface temperature:
- “+”, “-”
- Length: (X10-1mm)
- Width: (X10-1mm)
- Thickness: (X10-1mm)
- Rated voltage:
 

A: >240V	B: 240V
C: 230V	D: 220V
E: 120V	F: 110V
G: 100V	K: <100V

## PTC HEATING

PTC standard heating device, whose working is dependent on the PTC heating pyrogen, can maintain temperature control securely and reliably. Use: hairdressing devices, massaging apparatus, wax-melting instruments, electric iron, etc



### Product model

RFT	008	D	/	250	/	25X25
1	2	3		4		5

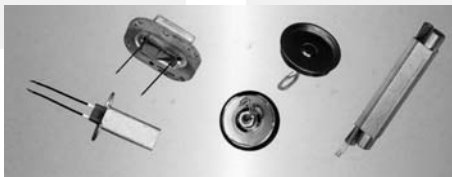
- RFT: heater
- Heater no.
- Rated voltage: B: 240V - C: 230V - D: 220V - E: 120V  
F: 110V - G: 100V - K: <100V
- Surface temperature (°C): 50 °C ~ 290 °C
- Heater specification

## RESISTENZE PTC PER ACQUA

Queste resistenze per acqua, sviluppate utilizzando gli elementi PTC, possono essere impiegate per mantenere una temperatura costante, senza così usare i tradizionali strumenti di controllo della temperatura esterna.

Hanno un costo assai vantaggioso, sono di lunga durata e non si danneggiano se usate senza acqua.

Utilizzato con differenti voltaggi, può essere adattato alle più svariate applicazioni elettriche di uso casalingo.



## PTC WATER HEATER

The water heater, that have been developed by method of using temperature-controlling instruments to control the exterior temperature.

It enjoys a low cost and is more endurable and will not be damaged when used without water

It is applicable to a wide range of voltages and to the requirements of different household electric appliances.

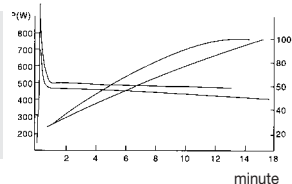
### Model: LKYW/500

Items	Parameter
Applicable voltage	100-240V
Consumed power (boiling AT BOILL)	550W + 10%
Consumed power (after 1 minute of cooling)	595W + 10%
Insulation and compression resistance	1500V/S
Current leakage	Max 0,5 mA
The exterior temperature during dry combustion	Max 255 °C

### The characteristics of water heating

#### Test condition

- water: 800cc
- water temperature: 25 °C
- voltage: 100V-240V

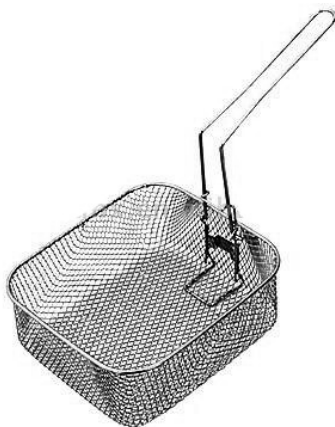


## VASCHE E CESTELLI IN ACCIAIO INOSSIDABILE PER ALIMENTI

- Varie misure
- Acciaio inox 202/304

## STAINLESS STEEL TANKS AND BASKETS

- Different size
- 202/304 Stainless steel



## ALLARME PER PORTA/FINESTRA

**Tipo: SC07**

### CARATTERISTICHE GENERALI:

- Installazione facile con adesivo. Impianto senza cavi.
  - Segnala l'ingresso dalla finestra o dalla porta.
  - Il sensore magnetico attiva l'allarme.
  - Facile da attivare o disattivare selezionando l'interruttore On/Off.
  - Allarme a 105 dB di uscita.
  - Funzionante a 3 pcs 1.5V LR44 con una cella a pulsante (batterie incluse).
- Questo pacchetto include:**
- Unità principale con interruttore interno a lamella.
  - Barra magnetica con adesivo.
  - Adesivi di avvertimento.

## WINDOW/DOOR ALARM

**Type: SC07**

### GENERAL FEATURES:

- Easy installation by adhesive tape. Wiring not required.
  - Detects entry from door or window.
  - Magnetic sensor activates alarm.
  - Easy arm/disarm by selecting on/off switch.
  - Built-in alarm of 105 dB output.
  - Operated by 3 pcs 1.5V LR44 button cell (batteries included)
- This package includes:**
- Main unit with internal reed switch.
  - bar magnet with adhesive tape.
  - Warning stickers



### Questo pacchetto offre: VERSATILITÀ:

Questo allarme può essere facilmente montato con adesivo alla finestra o alla porta. Non sono richiesti impianti o trapanature.

### AFFIDABILITÀ:

Un interruttore a sensore magnetico segnala un'entrata proteggendo la vostra casa o il vostro ufficio sia in vostra presenza che assenza.

**DETERRENTE PER LADRI:**  
Adesivo di avvertimento per porta e finestra viene fornito gratuitamente con il pacchetto.

**DESIGN ELEGANTE:**  
Questo tipo di allarme di raffinato design, di dimensioni ridotte si adatta ad ogni tipo di ambiente.

### This Security Package offers: VERSATILITY:

This alarm can be easily mounted by adhesive tape to window or door. Wiring or hole drilling is not required.

### RELIABILITY:

Magnetic sensor switch detects entry protecting your home or office whether you are in or out.

### THEFT DETERRENCE:

Warning door/window sticker is supplied free with the package.

### ATTRACTIVE DESIGN:

The sleeky styled alarm in mini size will fit in with any decor.

